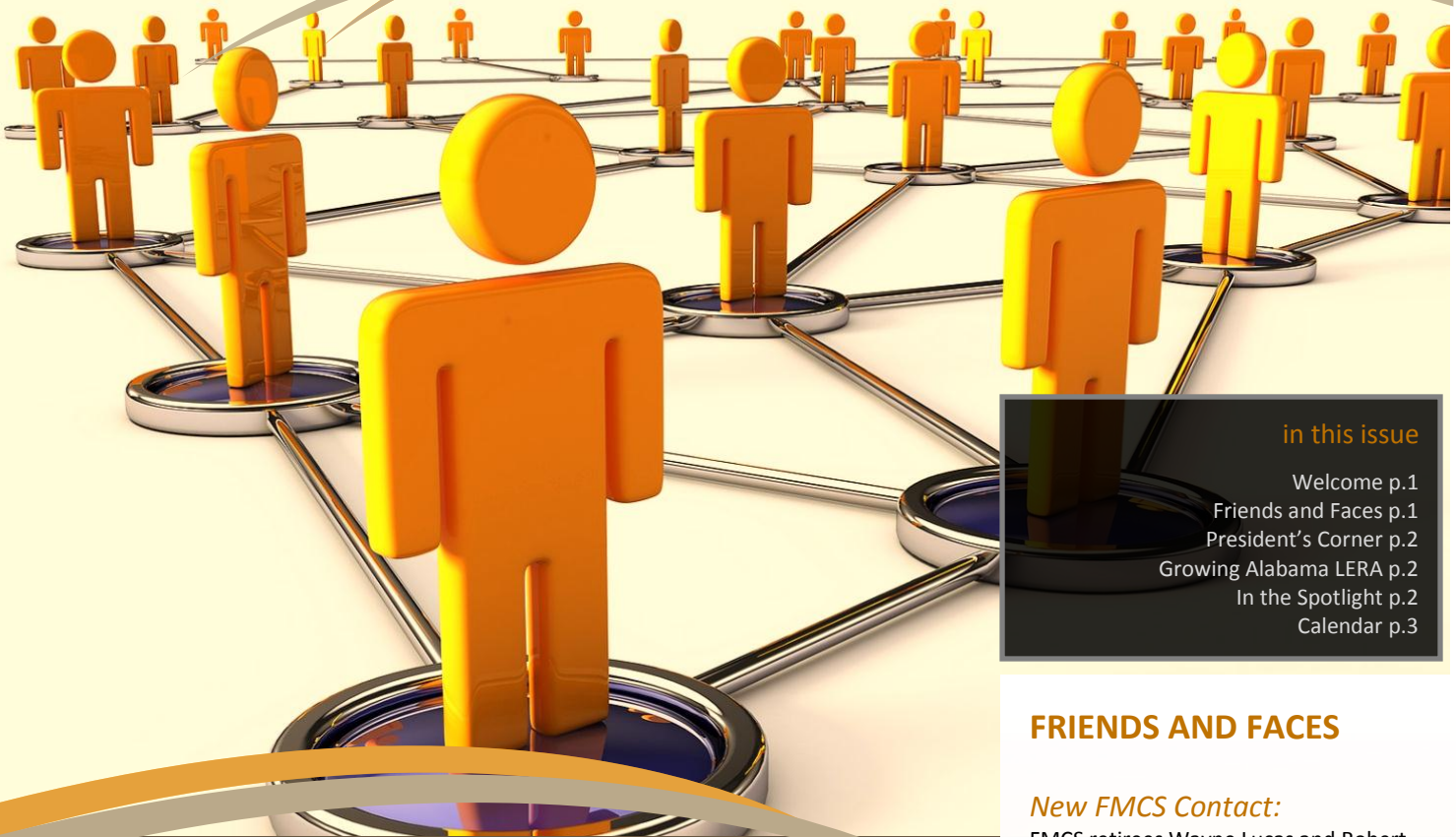


# CONNECTIONS

The newsletter of LERA-ALABAMA  
ISSUE 01 MARCH 2013

Celebrating **28**  
Years!  
**LERA**  
ALABAMA CHAPTER



## in this issue

Welcome p.1  
Friends and Faces p.1  
President's Corner p.2  
Growing Alabama LERA p.2  
In the Spotlight p.2  
Calendar p.3

## Welcome to the first edition of "Connections"!

Connections is part of a comprehensive outreach plan for LERA-Alabama. Through this newsletter we hope to keep you informed about key events and topics affecting Labor Relations in the State of Alabama as well as on the National level. In this issue, you'll find information about upcoming meetings, our membership, and relevant information affecting our Chapter. In future issues, we hope to add feature stories regarding the labor relations community, regulations, and other timely topics. It will be a tool to help LERA-Alabama maintain its network of management, labor, academics and neutrals.

This is *your* newsletter! Let us know how we can make it better, more useful. We hope it is something that will 'connect' with you!

## FRIENDS AND FACES

### *New FMCS Contact:*

FMCS retirees Wayne Lucas and Robert Dillard were in attendance at the Area Labor Management Relations Council luncheon in Huntsville, Alabama on February 7<sup>th</sup>. New contact Information for each is:

- Wayne Lucas  
wslld@bellsouth.net
- Robert Dillard  
Rdillard4216@att.net

New to the FMCS office in Birmingham:

- Gregg A. Tipton, Commissioner  
205.731.0482  
gtipton@fmcs.gov

### *On the mend:*

Tom Surtees, Director, Alabama Department of Labor, is undergoing treatment for Lymphoma. A Caring Bridge site has been set up where you check on his progress and wish him a speedy recovery. Visit the website at this address:  
<http://www.caringbridge.org/visit/tomsurtees>



We are trying some new things this year, and you are looking at one of them! This quarterly newsletter is just one of the new ideas being implemented to help grow Alabama-LERA.

LERA provides key resources and benefits for unions, management, academics and neutrals...our focus in 2013 is to increase our membership base and grow our Chapter.

I would like to ask of each of you to help us in this endeavor. Think of an individual or group who might benefit from being a member of LERA. We have experts and outstanding programs that provide insight into the latest regulations and trends affecting labor and management. Make a few phone calls and invite someone to attend a local meeting. Let's build our membership – not only will our new members benefit, but our Chapter will benefit from new ideas and perspectives.

John Powell, an English composer, said "Communication works for those who work at it...". It won't always be easy, but if we focus on communication - really reaching out to the community - we will reap the rewards of increased membership and a thriving Chapter. Please let me know of ways we can be of help, or any ideas you have for improvements. We are looking forward to a productive year!

## Growing LERA-Alabama...

Growing our membership – it's our top priority in 2013! We plan to do this by:

1. Reaching out to the labor and management community: universities, corporations, unions, friends we haven't seen lately at our meetings...with around 2 million workers in the Alabama labor market, there are plenty of opportunities to grow our chapter!
2. Continuing our Chapter's history of providing top-caliber programming at meetings and our annual conference.
3. We also hope to reach new potential members by using new communication tools, print and electronic media, and by developing a stronger presence on the internet.

Read the "President's Corner" message on this page for more details...



ABOVE: Attendees enjoy a moment of laughter at the 2012 Birmingham Dinner meeting, hosted by Alabama Power Company. Keynote speaker Wendy Padilla Madden of Balch & Bingham provided an "Update on the Alabama Immigration Law". See page 3 for a calendar of upcoming LERA-ALABAMA meetings. L-R: Emory Barnette, Talmage Reynolds, Katherine Chahrouri, Valerie Singleton, and Jill Curtis.

## IN THE SPOTLIGHT:

### The Montgomery Legislative Update Dinner

**When:**

March 14, 2013

Registration at 5:30pm

Dinner & Program at 6:00pm

**Where:**

Department of Labor,  
Montgomery Al

**How:** Cost is \$35. Reserve your place by e-mail to: [patrick.rasco@nasa.gov](mailto:patrick.rasco@nasa.gov)





## UPCOMING EVENTS

### MONTGOMERY LEGISLATIVE UPDATE DINNER

March 14, 2013

6:00 PM

Alabama Department of Labor

### MOBILE LUNCHEON

May 7, 2013

11:00 AM

Location to be Determined

### ALABAMA GOVERNOR'S LABOR CONFERENCE

June 2-6, 2013

Perdido Beach Resort, Orange Beach, AL

### HUNTSVILLE LERA/ALMRC LUNCHEON

June 20, 2013

11:30 AM

Redstone Arsenal Officer's Club, Marshall Space Flight Center, AL 35812

### LERA-ALABAMA CHAPTER STATE CONFERENCE

September 8-10, 2013

Orange Beach Alabama

### BIRMINGHAM DINNER MEETING

December 5, 2013

IBEW System Council U-19, 12181 Hwy 25 Calera Al, 35040

### Alabama-LERA

#### 2012-2013 Executive Board

##### PRESIDENT:

Patrick Rasco, Director of Labor Relations, Marshall Space Flight Center  
256.679.6416 patrick.rasco@nasa.gov

##### PRESIDENT ELECT:

Stephen C. McCormick, Alabama Dept of Labor, 334.590.3931  
stephen.mccormick@labor.alabama.gov

##### IMMEDIATE PAST PRESIDENT:

Talmage R. Reynolds, TR Consulting  
trreynolds@bellsouth.net  
256.654.6574

##### TREASURER:

Trevor Bain  
tbain@cba.ua.edu 205.348.8939

##### SECRETARY:

Bill Frederick, Alabama Power,  
wefreder@southernco.com  
205.257.3174

##### AREA VICE PRESIDENTS:

Emory Barnette, United Steelworkers  
ebarnette@usw.org 251.316.0961

Edward L. Harrison, Professor Emeritus  
eharris@usouthal.edu 251.460.6715

Joe Pledger, International Rep, IBEW  
joe\_pledger@ibew.org 251.675.1989

Judith L. King  
Judiking8@gmail.com 205.422.3985

Al Henley, Alabama ALF-CIO  
alhenley01@bellsouth.net  
334.834.1061

Valerie T. Singleton, URS  
valerie.t.singleton@nasa.gov  
256-544-6910

Tony Quillen, IBEW 558  
tquillen@ibew558.org 256-544-6951

Katherine Chahrouri, NLRB  
katherine.chahrouri@nlrb.gov  
205.933.3016

We'd love to hear from you!

Please e-mail your feedback/suggestions to: patrick.rasco@nasa.gov

For information on becoming a member of LERA-Alabama contact:  
Bill Frederick, 205.257.3174 wefreder@southernco.com

Celebrating **28**  
Years!  
**LERA**  
ALABAMA CHAPTER